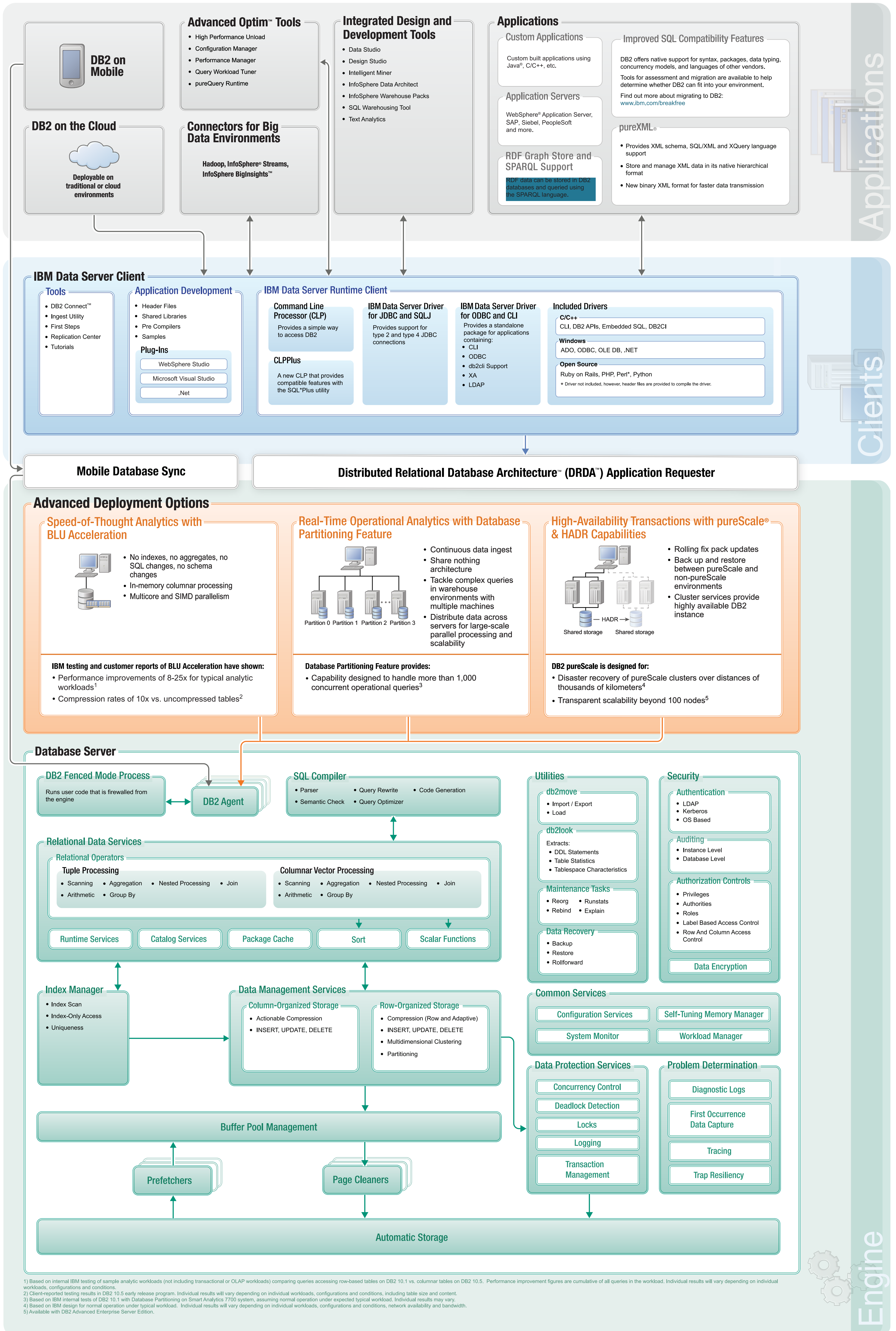
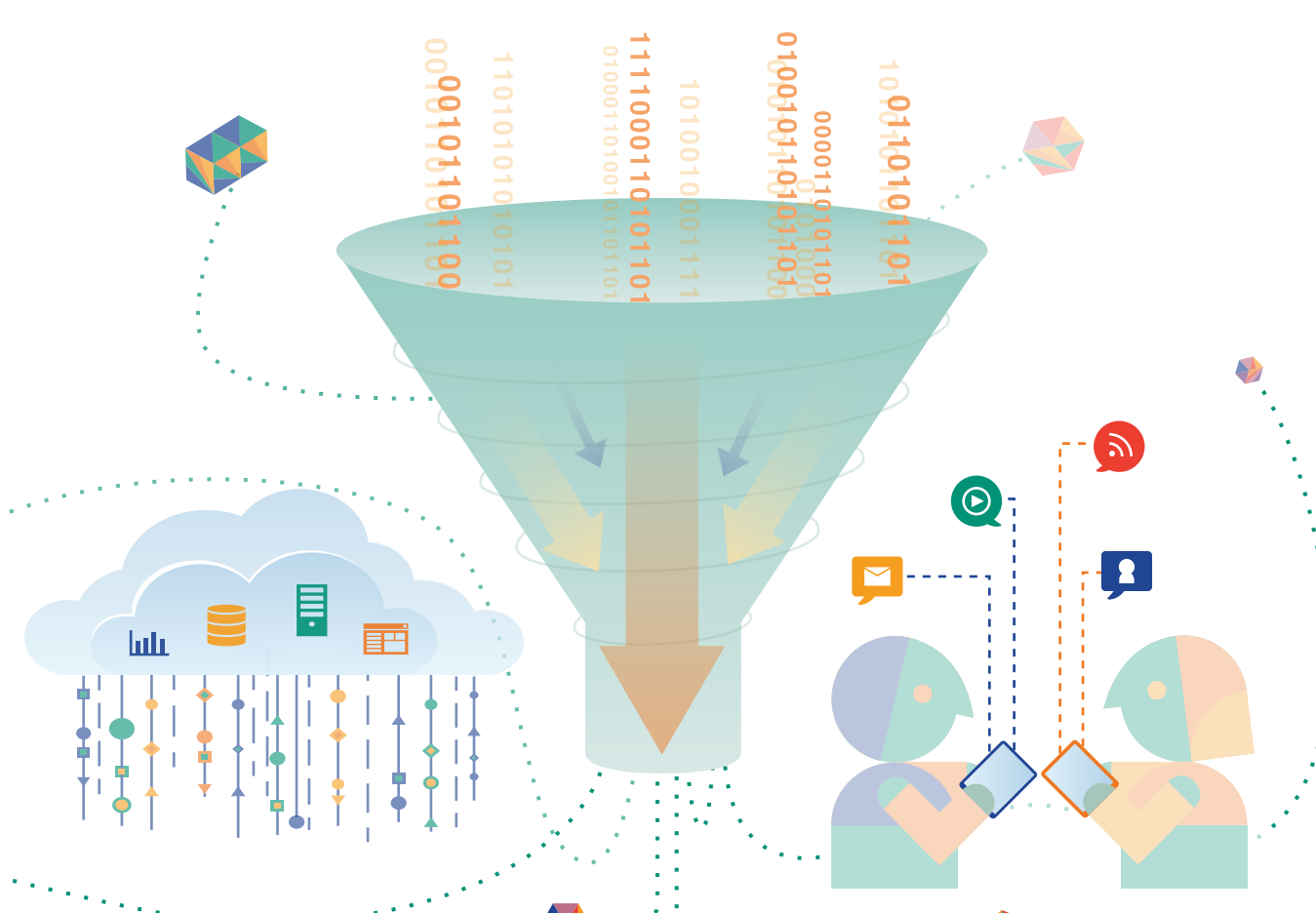


IBM® DB2® 10.5

For Linux®, UNIX® and Windows®

Optimized
for **mobile**, **cloud**, and **big data**



1) Based on internal IBM testing of sample analytic workloads (not including transactional or OLAP workloads) comparing queries accessing row-based tables on DB2 10.1 vs. columnar tables on DB2 10.5. Performance improvement figures are cumulative of all queries in the workload. Individual results will vary depending on individual workloads, configurations and conditions.
 2) Client-reported testing results in DB2 10.5 early release program. Individual results will vary depending on individual workloads, configurations and conditions, including table size and content.
 3) Based on IBM internal tests of DB2 10.1 with Database Partitioning on Smart Analytics 7700 system, assuming normal operation under expected typical workload. Individual results may vary.
 4) Based on IBM design for normal operation under typical workload. Individual results will vary depending on individual workloads, configurations and conditions, network availability and bandwidth.
 5) Available with DB2 Advanced Enterprise Server Edition.

